

# Island Spas™

REDEFINING YOUR SPA EXPERIENCE



ARTESIAN SPAS™  
WELLNESS FOR EVERY BODY

*“The Power of Hydrotherapy  
the Art of Artesian”*



# ARTESIAN SPAS ISLAND CLASS

Built to the same world-class standards of quality - by the same gifted hands that bring the Artesian Elite spas to market, the Island Class is as unflinching in quality as it is in aesthetic appeal.

However, the expert craftsmanship and stunning design are not the only compelling aspects of the Island Spa. This spa line is built to deliver robust and meaningful hydrotherapy, performing consistently at the top of its class. What's more, with the Island Class, each spa is uniquely crafted to meet your specific needs and cater to your demanding tastes, while always finding a way to accommodate your budget. We are committed to building the highest performing, best-looking, premium spas available in the market. Ranging from 33 jets to 72 and everywhere in-between, each Island can be a one of a kind, personalised retreat.

You get to pick the Island spa that perfectly fits your needs. So, you can relax with an Island of your own.

## WHY AN ARTESIAN ISLAND SPA?

Quality, Power, Design, Reliability, Attention to detail, Service. Sit back and relax, we've got it covered!

Artesian Spas offer a different approach to the spa market. Our dedicated dealer network are passionate about providing professional support on all spa related issues, helping you to make informed decisions during and after the purchase of your spa. We will provide help at the initial enquiry, assistance on making the correct spa choice, advice on chemicals and installation, then the quality care and after sales service that every customer deserves. Artesian Dealers are there to make the whole process simple, friendly and professional.









# THE ULTIMATE HYDROTHERAPY MACHINE

## HELIX™ JETS: A NEW SPIN ON SPA JETS

The Island Class utilises Artesian's **revolutionary** patented Helix™ jets to provide the best possible hydrotherapy massage available. This can be combined with our unique Neck and Foot Blasters to provide a full head to toe massage. You even have the option of adding **MicroSilk Technology** to your spa, providing the ultimate hydrotherapy experience.

This superior jet, aptly named the Helix™, has been designed to provide a truly remarkable hydro-massage exclusive to Artesian Spas. Engineered from the concept of the double helix, the jets use a right-directional spiral on the inside of the cylinder. This causes water to spiral out in a twisting manner, providing jet pulsation and great massaging pressure. As a complete system, these jets provide the very best in hydro-massage.

### ProHelix™ Jets



Large rotary Helix jets providing a high volume of water to massage large muscles in the body. The jets can be set to provide a large or small sweeping massage that relaxes tense muscles.

### TheraHelix™ Jets



Midsize Helix jets, strategically placed in small groups to massage muscles such as calf, hamstring, deltoids, and triceps. These jets provide a therapeutic massage to areas of the body where you need it most.

### AccuHelix™ Jets

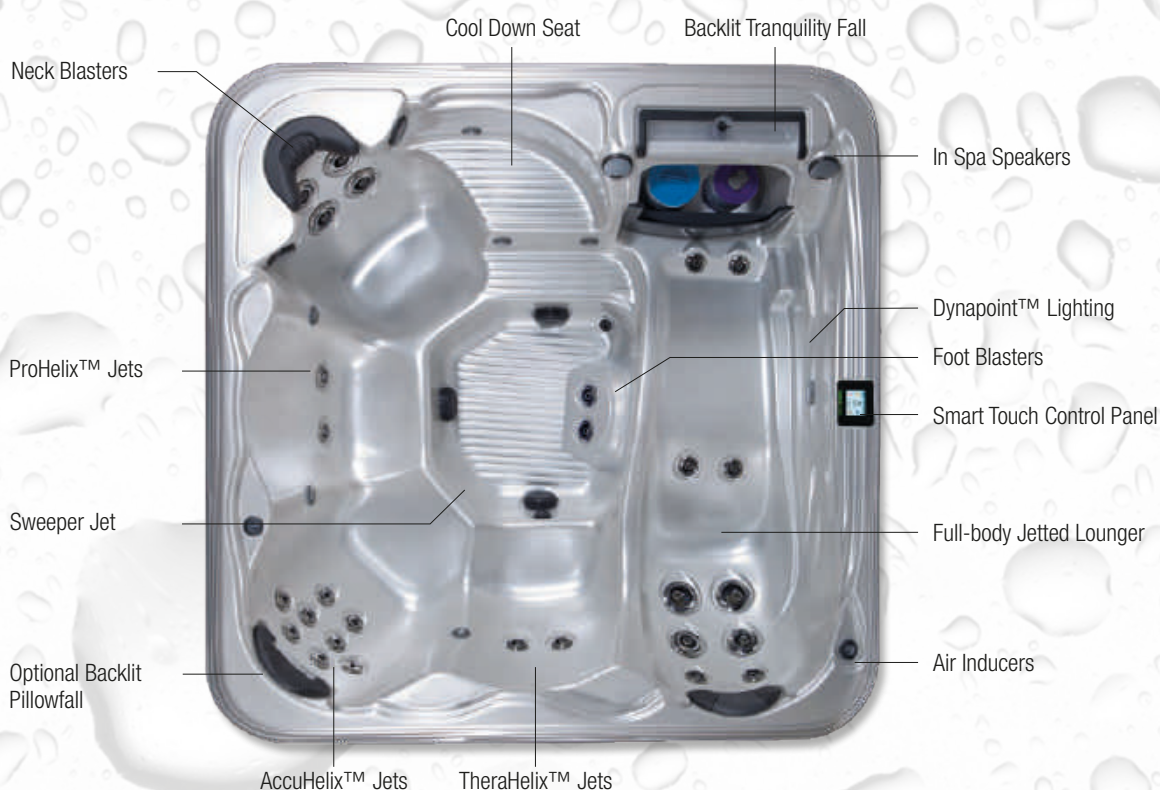


Small directional Helix jets placed in large groupings to massage larger regions of the body. These jets drive into muscles with pin point accuracy in a corkscrew manner giving a powerful massage.

### Neck & Foot Blasters



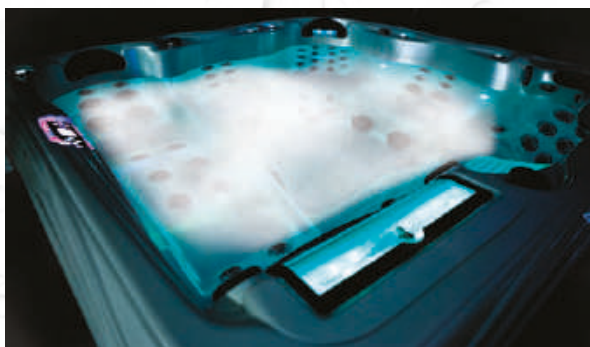
Extremely powerful large jets with several outlets providing multiple blasts of water to effectively massage the shoulder / neck region and feet.



## SKIN REJUVENATION WITH MICROSILK®.

Use MicroSilk for 20 minutes a day to make you feel better and look younger.

With a push of a button, your Island Spa quickly starts to fill with MicroSilk that blankets your entire body with billions of oxygen-rich micro bubbles, giving your skin a luxuriously silky feeling whilst moisturising and cleansing at the same time. The Micro bubbles are smaller in size than pores on the skin, allowing the bubbles to enter and lift away any impurities, whilst plumping, hydrating and reducing fine lines and wrinkles. Bathing in oxygen-rich water is good for your health, increasing the oxygen levels up to 70%, and improving collagen production.



### MICROSILK BENEFITS:

- Increased Hydration - Increased oxygen results in cellular respiration.
- Enhanced Skin Cell Growth Reducing Fine Lines and Wrinkles - Oxygen improves collagen strength.
- Therapeutic Levels of Anions - Shown to reduce scars & reduce skin irritations as well as providing a relaxing sense of well-being.

Available on most models (see page 12).

## DISCOVER THE ISLAND SPAS RANGE...

### BIMINI

'Bimini' 3.35m x 2.32m x 0.92m

You will find that fun family time and entertainment are easy to come by when you are enjoying the Bimini. Designed for families and entertaining guests, you will have no trouble getting everyone together to enjoy this massive spa. Equipped with six massage seats, two personal loungers, and a cool down seat, the Bimini provides multiple choices for hydrotherapy.

specifications	Bimini
seating capacity	9
dry weight	570 Kg
filled weight	2765 Kg
water capacity	2195 Ltrs
pumps	3 / 2 Therapy Pumps
circulation / filtration	24-hr Whisper Pure™
heater	3 kW
full foam	Yes
light	Dynapoint™ Multicolour
filter type	(1) 50 sq ft Pleated (1) Disposable Micron
jets	72 / 52



island class



# ISLA MARGARITA

The Isla Margarita is a spacious family spa with 71 powerful jets and seating for up to nine people. It features a circular bench moulded seamlessly into the organic spa design. It also features hand massage tracks integrated into the hydrotherapy seat and lounge to target reflexology points that rejuvenate tired hands and boost circulation.

specifications	Isla Margarita
seating capacity	9
dry weight	454 Kg
filled weight	2536 Kg
water capacity	2082 Ltrs
pumps	3 Therapy Pumps
circulation / filtration	24-hr Whisper Pure™
heater	3 kW
full foam	Yes
light	Dynapoint™ Multicolour
filter type	(1) 50 sq ft Pleated (1) Disposable Micron
<b>jets</b>	<b>71</b>

'Isla Margarita' 2.74m x 2.32m x 0.92m



# BARBADOS

This is the all new Dual Lounger hot tub with 61 high performing jets, including two fantastic foot blasters! This wonderful addition allows two people to enjoy a lounger at the same time, facing in opposite directions to provide a great sociable atmosphere.

specifications	Barbados
seating capacity	5
dry weight	430 Kg
filled weight	2133 Kg
water capacity	1703 Ltrs
pumps	3 Therapy Pumps
circulation / filtration	24-hr Whisper Pure™
heater	3 kW
full foam	Yes
light	Dynapoint™ Multicolour
filter type	(1) 50 sq ft Pleated (1) Disposable Micron
footblasters	Yes
<b>jets</b>	<b>61</b>

'Barbados' 2.32m x 2.32m x 0.92m



# GRAND BAHAMA

This spa is designed to easily accommodate six people, yet it has incorporated a lounger in the seating that provides the ultimate in comfort. The 61 and 45 jet versions both feature a unique neck collar massage system in one of the corner seats. The Grand Bahama 61 also features three powerful therapy pumps to offer the deep tissue massage associated with the Island Range.

specifications	Grand Bahama
seating capacity	6
dry weight	430 Kg
filled weight	2140 Kg
water capacity	1710 Ltrs
pumps	<b>3 / 2</b> Therapy Pumps
circulation / filtration	24-hr Whisper Pure™
heater	3 kW
full foam	Yes
light	Dynapoint™ Multicolour
filter type	(1) 50 sq ft Pleated (1) Disposable Micron
footblasters	Yes / Option
<b>jets</b>	<b>61 / 45</b>

‘Grand Bahama’ 2.32m x 2.32m x 0.92m



# GRAND CAYMAN

This spa is “grand” in every way, but especially in eye appeal and performance. The Grand Cayman sports attractive lines that are very inviting to the spa user who is looking for the comfort and relaxation of hydrotherapy. This spa is designed to easily accommodate seven people, but its open seating plan has proven to be both versatile and expandable.

specifications	Grand Cayman
seating capacity	7
dry weight	430 Kg
filled weight	2228 Kg
water capacity	1798 Ltrs
pumps	<b>3 / 2</b> Therapy Pumps
circulation / filtration	24-hr Whisper Pure™
heater	3 kW
full foam	Yes
light	Dynapoint™ Multicolour
filter type	(1) 50 sq ft Pleated (1) Disposable Micron
footblasters	Yes / Option
<b>jets</b>	<b>61 / 46</b>

‘Grand Cayman’ 2.32m x 2.32m x 0.92m





# ANTIGUA

The Antigua spa in the Island Spa line is a smaller version of the Island Grand Bahama at 2.14m by 2.14m in size. Like the Grand Bahama, the Antigua features lounge seating that provides the ultimate in comfort and hydrotherapy. It is available in 52 and 33 jet versions.

specifications	Antigua
seating capacity	6
dry weight	383 Kg
filled weight	1808 Kg
water capacity	1425 Ltrs
pumps	2 Therapy Pumps
circulation / filtration	24-hr Whisper Pure™
heater	3 kW
full foam	Yes
light	Dynapoint™ Multicolour
filter type	(1) 50 sq ft Pleated (1) Disposable Micron
footblasters	Option
<b>jets</b>	<b>52 / 33</b>

‘Antigua’ 2.14m x 2.14m x 0.92m



# CAPTIVA

This seven foot spa is a smaller version of the eight foot Grand Cayman. The Captiva is tailor made for the spa buyer who wants an open seated spa but has space restrictions. Available in 52 or 33 jetted versions both with two therapy pumps and the unique neck collar massage.

specifications	Captiva
seating capacity	7
dry weight	383 Kg
filled weight	1898 Kg
water capacity	1515 Ltrs
pumps	2 Therapy Pumps
circulation / filtration	24-hr Whisper Pure™
heater	3 kW
full foam	Yes
light	Dynapoint™ Multicolour
filter type	(1) 50 sq ft Pleated (1) Disposable Micron
footblasters	Option
<b>jets</b>	<b>52 / 33</b>

‘Captiva’ 2.14m x 2.14m x 0.92m





# NEVIS

A smaller version of the Antigua, the Nevis has been designed as a space saving spa that will fit through most exterior doors whilst still giving you all the luxury and comfort that are characteristic of the Island range. With the option of 45 or 33 powerful massaging jets, this spa is an Island jewel.

specifications	Nevis
seating capacity	5 / 6
dry weight	350 Kg
filled weight	1525 Kg
water capacity	1175 Ltrs
pumps	2 Therapy Pumps
circulation / filtration	24-hr Whisper Pure™
heater	3 kW
full foam	Yes
light	Dynapoint™ Multicolour
filter type	(1) 50 sq ft Pleated (1) Disposable Micron
footblasters	Option
<b>jets</b>	<b>45 / 33</b>

'Nevis' 2.14m x 1.98m x 0.87m



# SANTA CRUZ

This three seat treasure offers all of the comforts of the larger Island Spas in a small, space accommodating package. With two hydrotherapy seats as well as a relaxing lounger, this spa is the obvious choice for those that do not have much space but do not want to sacrifice comfort. The Santa Cruz comes in a 33 jet version.

specifications	Santa Cruz
seating capacity	3
dry weight	280 Kg
filled weight	1132 Kg
water capacity	852 Ltrs
pumps	2 Therapy Pumps
circulation / filtration	24-hr Whisper Pure™
heater	3 kW
full foam	Yes
light	Dynapoint™ Multicolour
filter type	(1) 50 sq ft Pleated (1) Disposable Micron
<b>jets</b>	<b>33</b>

'Santa Cruz' 2.14m x 1.56m x 0.82m





# STANDARD FEATURES

## UNSURPASSED QUALITY

At Artesian, we ensure you get the best possible value by producing the highest quality spas available today. From fantastic build quality and green technology to the wonderful hydrotherapy and ambience enhancing features, Island Class spas provide more as standard.

## 24 HR WHISPERPURE™ CIRCULATION SYSTEM



The amazing 30 G.P.M. at 0.6 amp super high-efficiency pump circulates all the water in the spa up to 100 times per day. With silent pump technology, it is so quiet you won't believe it's working as hard as it does.

## INSULATING SAFETY COVER

The Island Class luxury safety cover is tapered from 4.5" to 2.5" providing a thick insulating barrier for ultimate spa heat retention.

## ISLAND SPA MICRON FILTER

The Island spa disposable micron filter creates a unique filtration method. With varied density fibres, the dirt-holding capacity of the filter as well as its efficiency is greatly improved.

## PERMABASE™ - ABS FLOOR

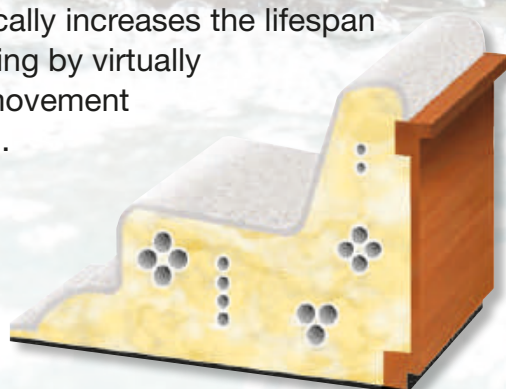
Each one of our Island Spas are fitted with a tough, ABS thermoplastic base pan. Permabase is a fully moulded floor that protects the under side of your spa from the elements.

## SMART CONTROL PANEL

This user-friendly Touch Screen control utilises a computerised Digital Control System with colour LCD panel. Whilst using visible icons making control of the spa simple for the spa user, the Touch Screen control also features advanced functions making it WiFi ready and multi-lingual.

## FULL FOAM INSULATION

The space between the maintenance-free cabinet and the structure is filled with high-insulation foam. Combined with our heavy-duty spa cover, this works to ensure the best rate of heat retention available in any spa. Full-foam also dramatically increases the lifespan of the plumbing by virtually eliminating movement and vibration.





### HELIX™ JETS

The Ultimate in Hydrotherapy (see page 4 for more information).



### DYNAPOINT™ MULTI LED LIGHTING

The right lighting adds the perfect touch to your spa experience, and Island Spas DynaPoint™ LED lighting system is designed to set the mood.

Our ten-function system leaps to life with a touch of the button on the spa control pad. Each touch washes the water with up to five different coloured lights and allows the user to stop on any one of the preferred colours or to relax with combinations of colours set side-by-side in an artful transition. This dazzling light show is your boarding pass to a truly adventurous soak.



The system consists of the main light, four additional light lenses, a backlit 'Tranquility Waterfall' on the filter housing, two cabinet lights and lighting to the optional Pillowfall.

### FOOTBLASTERS

These extremely powerful blaster jets have their own therapy pump and provide multiple blasts of water to provide a wonderful foot massage. Standard on all 61 jet models. *Note: Optional on all models (additional pump included) except on the Bimini, Isla Margarita and Santa Cruz.*

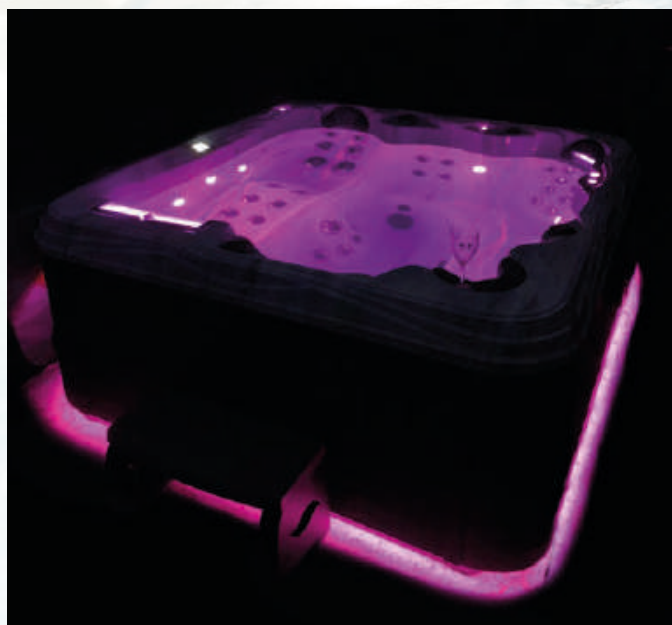




# CUSTOMISATION

## DYNABRITE™ DELUXE LIGHTING

Add the WOW factor to your back garden with this ultimate colour upgrade. Our Dynabrite™ Deluxe multicolour system creates the perfect night time ambience. The upgrade includes two additional 50mm underwater lights, lit airinducers above the waterline, backlit footblasters (where applicable) and a 360° degree glow at the bottom of the spa (not available on the Santa Cruz or Bimini). Select from a range of colours to suit your mood or have the lighting fade from colour to colour.



## PILLOWFALL

Simply enjoy the serene sound of falling water or nestle under and feel the warm water sweep down your neck and back.



## ARTESIAN BBA FULLY INTEGRATED SOUND SYSTEM

With your own Island spa in your back garden, total escape is within easy reach every day. An Artesian Stereo System is the perfect addition to complete your luxurious retreat. Our BBA System is an innovative stereo that offers marine-grade, state-of-the-art surround sound, complete with a powerful subwoofer. The BBA Fully Integrated Sound System is one of the best Bluetooth audio systems available and is controlled from the spa smart control panel, allowing you to stream your favourite songs through the 4 in-spa Speakers.



*Note: Not available on the Santa Cruz.*

## ARTESIAN PATIO SPEAKERS

Listen to your favourite music whilst gardening or relaxing on your patio without removing the cover of your spa. These exterior cabinet speakers provide unrivalled sound quality.

## WORLDWIDE WIFI APP

Now you can control your spa from your smartphone or any other smart device from anywhere in the world with this wireless innovative App. You can control the lighting, temperature and pumps of your spa. This wireless App even provides you with a helping hand for spa maintenance.





## OZONE

Ozone destroys bacteria, viruses, spores and fungus, as well as other contaminants. Ozone enhances the performance of chlorine and bromine in your spa and allows you to use substantially smaller amounts of those chemicals to achieve and maintain sparkling, clean water. Every Island spa can have an ozonator installed for 24 hours of treatment.

## PROPURE™ OZONE

This higher output ozone generator combined with vortex mixing chambers gives crystal clear water and requires even less chemicals than standard ozone.



## DIAMOND AOP™

This revolutionary system combines Micro-filtration, high efficiency circulation, UV sterilisation, Ozone and Artesian's ProPure Mixing Chamber to create the most advanced oxidation process (AOP) for water purification. AOP produces an ultraviolet light inside a quartz chamber with the optimum wavelength designed to destroy and eliminate bacteria and other micro-organisms.

## SPA FROG IN-LINE SYSTEM

This breakthrough system in water-care can be added to your spa to provide cleaner, clearer and softer spa water that's far easier to maintain. The system automatically dispenses bromine and water conditioner to your spa water. Simply replace the bromine and water conditioning cartridges when required.

## MICROSILK®

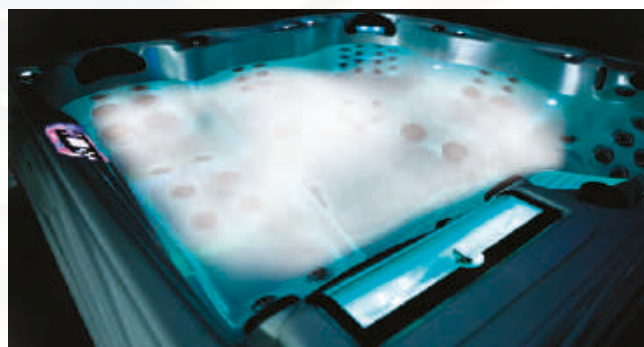
Using MicroSilk for 20 minutes a day helps you feel better and look younger. At the touch of a button, your spa begins to fill with MicroSilk to wrap your body in oxygen-rich microbubbles that are smaller than the pores of the skin. They penetrate to strengthen, moisturise and reduce wrinkles and fine lines. Bathing in oxygen-rich water is good for your health, increasing the oxygen levels up to 70%, and improving collagen production.

### OTHER BENEFITS INCLUDE:

- **Increased Hydration** - Increased oxygen results in cellular respiration.
- **Enhanced Skin Cell Growth** - Oxygen improves collagen strength and helps reduce fine lines and wrinkles.
- **Therapeutic Levels of Anions** - Shown to reduce scars & reduce skin irritations as well as providing a relaxing sense of well-being.

Microsilks is available on the Santa Cruz, Nevis 33 & 45, Antigua/Captiva 33 & 52 and Grand Bahama/Grand Cayman 45 & 46.

*Note: Not available with Footblasters.*

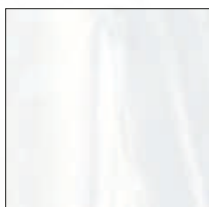




# PERSONALISATION

## ACRYLIC SHELL COLOURS

Every Artesian spa has a durable shell constructed of beautiful Lucite Spa acrylic with our revolutionary Diamondbond backing. It's easy to take care of your Lucite Spa acrylic - one of the glossiest, high quality surface materials available. The non-porous surface prevents dirt from accumulating and resists stains better than other plastic materials. With normal use, Lucite is so durable it will retain its beauty with minimum effort.



Silver Marble



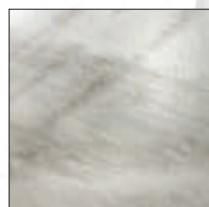
Sierra



White



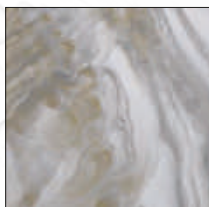
White Pearl



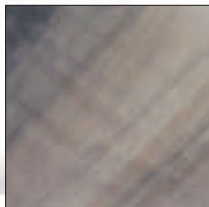
Glacier Mountain



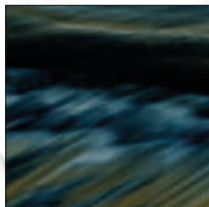
Wispy Blue



Smoky Mountains



Tuscan Sun



Midnight Canyon



Storm Clouds

**Lucite** SPA  
FEEL THE DIFFERENCE

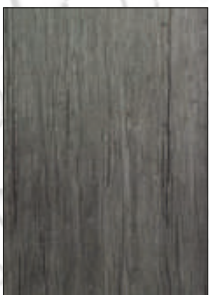
Note: Bimini available in Sierra & Silver Marble only. Isla Margarita is available in White Pearl, Silver Marble, Tuscan Sun, Sierra, Glacier Mountain, Smoky Mountains and Midnight Canyon only.

## LONG LASTING GRANDWOOD™ CABINET

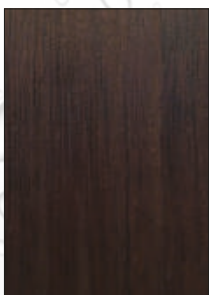
Every Island Spa comes standard with a long-lasting, wood-effect Grandwood™ cabinet adds years of maintenance free life to your spa. Panels are made of a durable, synthetic material that can withstand the harshest weather conditions, including snow, humidity, rain, sleet, and heat. Easily clean up these cabinets with soap and water, if necessary.



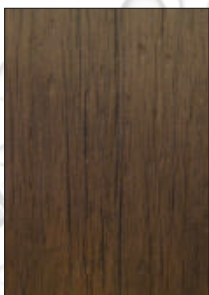
Black



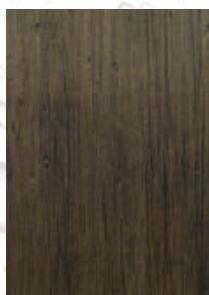
Grey



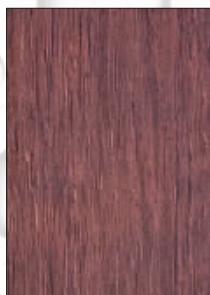
Java



Taupe



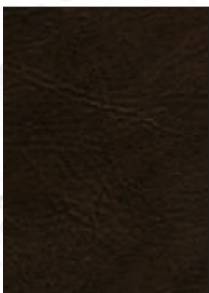
Antique



Sequoia

## INSULATING SAFETY COVER

The Island Class luxury safety cover is tapered from 4.5" to 2.5" providing a thick insulating barrier for ultimate spa heat retention.



Black



Charcoal



Walnut



Oxen





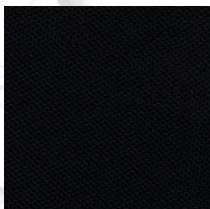
## PROGUARD™ COVER UPGRADE

The ProGuard™ has a 150mm to 100mm tapered high-density Dura-Core foam insert with 18-gauge galvanised steel c-channel beams and is capable of withstanding 270kg across the cover surface.

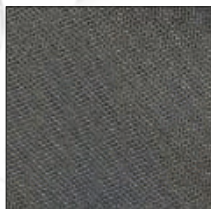
Note: Available in Black, Charcoal, Walnut and Oxen.

## ALL SEASONS SHIELD COVER UPGRADE

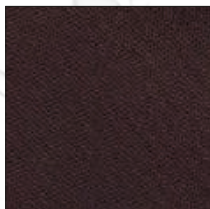
Our All Seasons Shield Cover fabric is 100% solution-dyed polyester that's extremely durable and light-weight. It also provides superior tear and abrasion resistance and are made with recyclable materials, reducing the overall cover weight by approximately 25%, as well as being environmentally friendly.



Midnight



Stone



Pinot

## WARRANTY

- Structure 12 Years
- Surface 5 Years
- Parts, Plumbing 2 Years
- Labour 2 Years
- Stereo and AOP Systems 1 Year

Warranty terms and conditions apply, for more information, please contact Artesian Spas UK Ltd.

NOTES:- Colour swatches in this brochure are to be used as a guide and have been matched as accurately as possible to the actual acrylic, cabinet and covers used, however due to print processes, it cannot be guaranteed that colours or patterns shown are 100% accurate. Please refer to your local Artesian Spas dealership for more information.

We've done all we can to make the specifications, technical details and all other information you see in this brochure accurate at the time of publication. Dimensions, capacities and weights are approximate. Specifications are subject to change without notice.

Worldwide WiFi app is free for the first 12 months, then requires an annual licence fee following that (currently \$24 per year). If not renewed after 12 months, the app will continue to operate in local mode.

Some images used in this brochure are for illustrative purposes only and some have been digitally rendered. Spa images may or may not show optional features.

## STANDARD FEATURES

Adjustable Helix™ Jets
DynaPoint™ Multi LED Lighting
Tranquility Waterfall
WhisperPure™ 24hr Circulation System
Powerful Therapy Pumps
Island Backlit Smart Pad Control
Dual Filter Water Management (Inc.1 Disposable Micron Filter)
Neck and Foot Blasters (most models)
Stainless Steel Escutcheons
Full Foam
PermaBase™ ABS Floor
4.5" to 2.5" ASTM Super Cover
GrandWood™ Cabinets
Cool Down Seat
Sweeper Jet

## OPTIONAL FEATURES

World Wide Wireless Spa Control App for Smart Technology & Smart Phones
BBA Fully Integrated Bluetooth Sound System
+ Artesian Patio Speakers (3")
DynaBrite™ Deluxe Multi LED Lighting
Backlit PillowFall
Foot Blasters Inc. Additional Pump (most models)
MicroSilk (most models)
Standard Ozone
ProPure™ Ozone
Diamond AOP™ Advanced Oxidation Process
Spa Frog System
All Seasons Shield Cover
Pro-Guard Cover

## WARRANTY

Structure 12 Years
Surface 5 Years
Parts, Plumbing & Cabinets 2 Years
Labour 2 Years
Stereo & Ozone/AOP Systems 1 Year





ARTESIAN SPAS™  
WELLNESS FOR EVERY BODY

Your Nearest Authorised Artesian Dealer is:



Phone: +44 (0) 1302 730295 Fax: +44 (0) 1302 366023  
Web: [www.artesianspas.co.uk](http://www.artesianspas.co.uk) Email: [info@artesianspas.co.uk](mailto:info@artesianspas.co.uk)

